

The seal of the Governor of Guam is a large, faint watermark in the background. It is a circular emblem with a blue outer ring containing the words "GOVERNOR OF GUAM" and "1978". Inside the ring is a shield with a white background, featuring a blue eagle with its wings spread, perched on a blue branch. The shield is surrounded by a blue border with white stars.

# Testing and Quarantine Requirements for International and Domestic Non-Tourist Travelers Arriving on Guam:

Summary Recommendations from the Governor and State  
Surgeon's Physician Advisory Group

Prepared by: Felix T. Cabrera, MD, MT (ASCP)  
June 5, 2020

GOVERNOR & STATE SURGEON  
PHYSICIAN ADVISORY GROUP

# Hot Spot Countries of Origin

Travelers originating from hot spot countries may pose the greatest risk of introducing additional COVID-19 cases to Guam.

\*\*Hot spots are defined as countries with COVID-19 case doubling rates that are less than every 30 days.

	Location	*Cases per 100K	**Doubling Rate
DOMESTIC	Guam	104	>30
	CNMI	51	>30
	USA	594	>30
INTERNATIONAL	Palau	0	>30
	FSM	0	>30
	Taiwan	2	>30
	Japan	14	>30
	Philippines	21	25.5
	South Korea	23	>30
ADDITIONAL COMPARISONS	Nepal	12	6.0
	Indonesia	12	29.0
	India	18	17.5
	Brazil	321	16.0

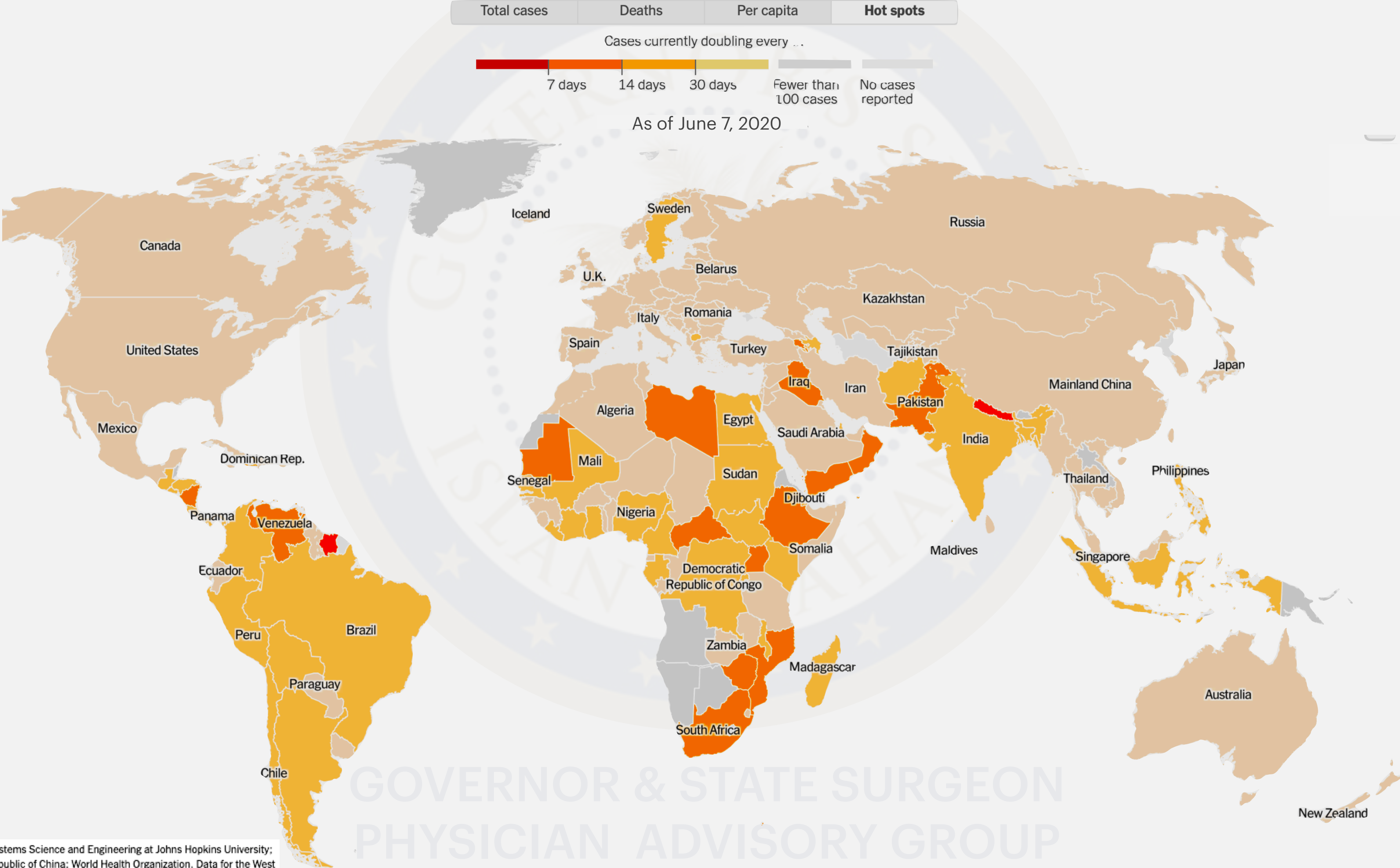
As of June 7, 2020

**Source:** WHO/JHU data via NYT <https://www.nytimes.com/interactive/2020/world/coronavirus-maps.html>

\*Note that looking only at Cases per 100K is NOT an accurate representation of active coronavirus spread.



**The New York Times**  
**Reported cases worldwide**



Sources: Local governments; The Center for Systems Science and Engineering at Johns Hopkins University; National Health Commission of the People's Republic of China; World Health Organization. Data for the West Bank and Gaza was reported together by the Palestinian Health Ministry and includes only Palestinian-controlled land. Russia is reporting data for Crimea, a peninsula it [annexed in 2014](#) in a move that led to international sanctions. Data for some countries, like the United States and France, include counts for overseas territories. Japan's count includes 696 cases and seven deaths from a cruise ship that docked in Yokohama. For hot spots: Doubling time is calculated for the last week of cases.

## International Hot Spot Arrivals

Testing is NOT  
required to board  
flight

Residents

Non-Residents

ALL persons having originated from or traveled through international locations deemed to be “hot spots” shall be subject to 14-day quarantine at a GovGuam approved quarantine facility.

## Domestic & International Non-Hot Spot Arrivals

Testing is NOT  
required to board  
flight

Residents

Non-Residents

14-day quarantine  
at home residence  
allowed. No test  
required.

14-day quarantine at personal  
residence or rental lodging  
with negative PCR test within  
1 week of arrival. Otherwise,  
will complete in GovGuam  
approved quarantine facility.

**FLIGHT**

**RESIDENCY**

**QUARANTINE**  
(14-Day Mandatory for All)

GOVERNOR & STATE SURGEON

A “Hot Spot” is defined as a country/location with COVID-19 case doubling rate less than every 30 days. A “Non-Hot Spot” location has a COVID-19 case doubling rate greater than or equal to every 30 days. Countries/locations hot spot status will ultimately be determined and updated by the Department of Public Health and Social Services in consultation with the Governor and State Surgeon’s Physician Advisory Group. Reference data sources from Johns Hopkins University, World Health Organization and other local government reports as compiled and regularly updated via The New York Times’ Coronavirus Map: Tracking the Global Outbreak at <https://www.nytimes.com/interactive/2020/world/coronavirus-maps.html>



## Arrivals from International Hot Spots

1. **ALL** persons having originated from or traveled through international locations deemed to be “hot spots” shall be subject to 14-day quarantine at a GovGuam qualified quarantine facility.
2. Residency status will NOT determine quarantine locations such as personal residence or rental lodging. Considerations for alternate quarantine locations will be made in certain limited circumstances.
3. Obtaining a negative test result is NOT a requirement for hot spot travelers, nor will it alter the quarantine requirements.

## Arrivals from International Non-Hot Spots & Domestic Locations

1. **ALL** persons traveling domestically or having originated from or traveled through international locations NOT deemed a “hot spot” shall be subject to 14-day quarantine at a GovGuam qualified quarantine facility.
2. **Guam Residents** shall be allowed to complete their 14-day quarantine at their home residence.
3. **Guam Non-Residents** can present a valid diagnostic laboratory COVID-19 PCR negative test result for SARS CoV2, that is not more than one (1) week from date of attempted entry into Guam, and shall complete the 14-day quarantine requirement at their personal residence or rental lodging.

A “Hot Spot” is defined as a country/location with COVID-19 case doubling rate less than every 30 days. A “Non-Hot Spot” location has a COVID-19 case doubling rate greater than or equal to every 30 days. Countries/locations hot spot status will ultimately be determined and updated by the Department of Public Health and Social Services in consultation with the Governor and State Surgeon’s Physician Advisory Group. Reference data sources from Johns Hopkins University, World Health Organization and other local government reports as compiled and regularly updated via The New York Times’ *Coronavirus Map: Tracking the Global Outbreak* at <https://www.nytimes.com/interactive/2020/world/coronavirus-maps.html>